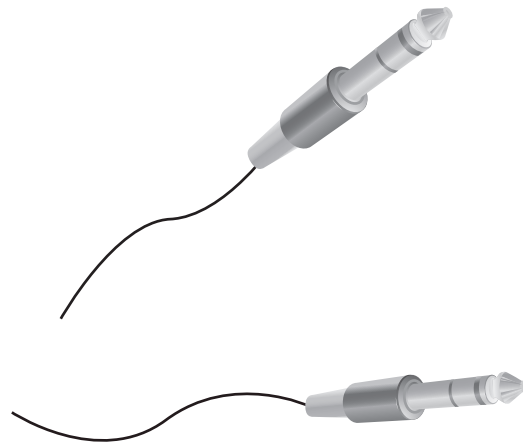
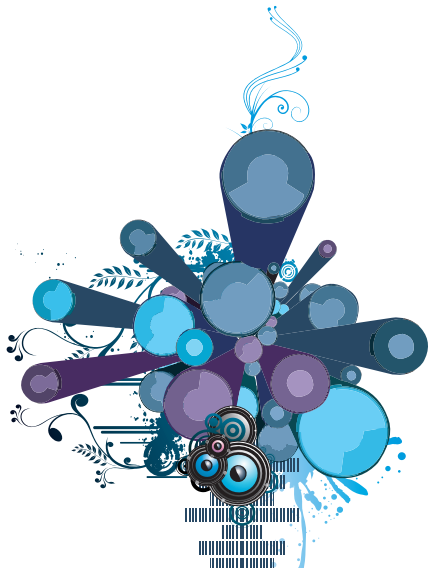
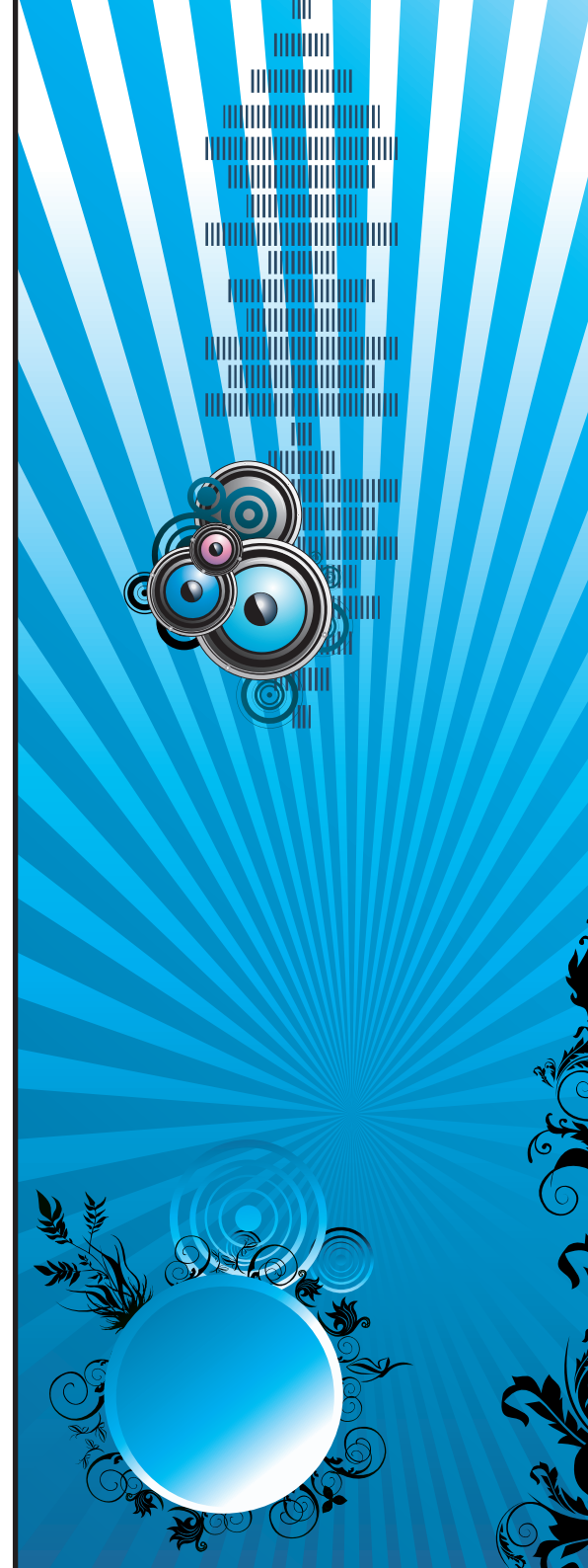


Land Rover Discovery 2

Ipod input mod



By Marvin (Diesel)





Discovery Series 2

The Land Rover 'Journey of Discovery' has raised £1million for the International Federation of Red Cross and Red Crescent Societies (IFRC).

The 50-day 'Journey of Discovery' from Birmingham to Beijing, was one of the most epic and ambitious modern-day overland journeys and celebrated the production of the One Millionth Land Rover Discovery - the world's most capable and versatile SUV.

John Edwards, Land Rover Global Brand Director said: "Land Rover is delighted to have reached the target £1,000,000 in aid of the IFRC – an organization we have had a relationship with since 1954."

Ipod input for Discovery head unit

Introduction

The following is a quick guide for installing your own auxiliary input for the standard head unit in a Land Rover Discovery Series 2. I put this together because it's a very capable unit with steering wheel controls and 3rd row seat controls—all of which would probably be lost by replacing the unit.

I put my input on the face of the head unit, it looks stock but is a little awkward with a jack plugged in. I will put another input maybe above the aux power plug or hidden below the drink tray and use this instead.

It really is up to you but some chopping, gluing and 'melting' is required to install the socket into the face. My advice is to conceal it somewhere else.



What will you need

Head unit removal keys

A Phillips head screwdriver

A 3.5mm switching jack socket

face mounting, Jaycar PS-0133

mount anywhere (recommended), Jaycar PS-0132

A soldering iron and solder

Wire to suit your choice of location

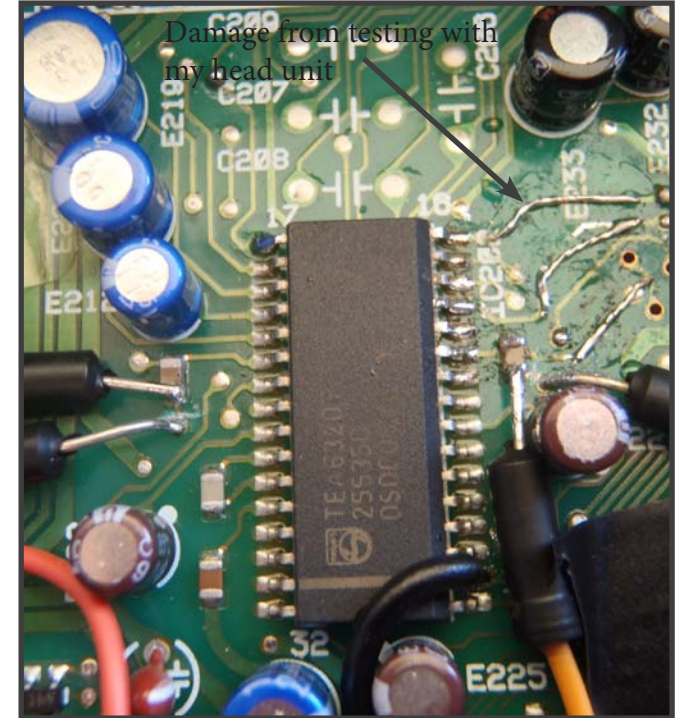
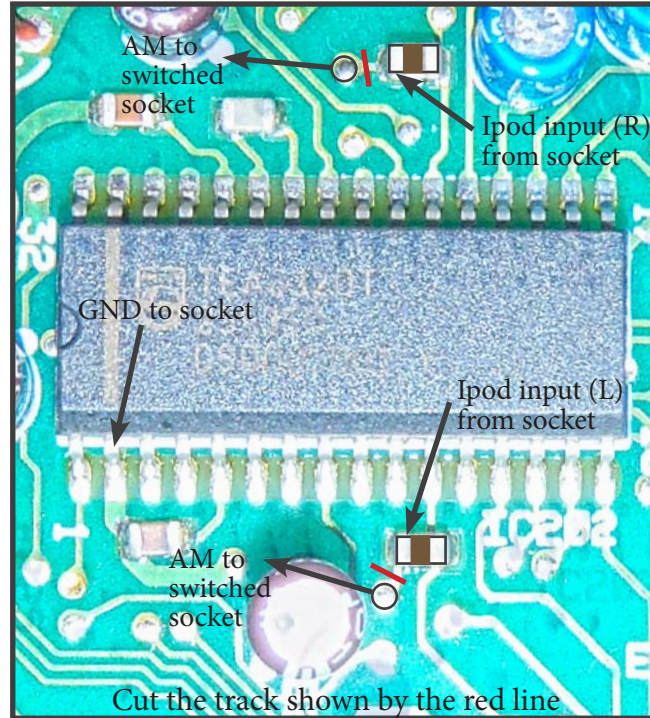
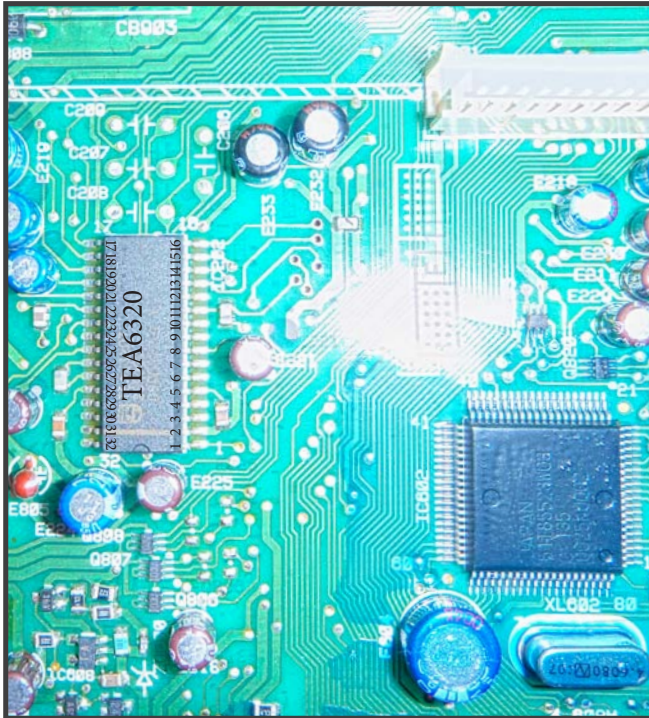
'bread board' jumpers are perfect

Cable to connect to the input

3.5mm to 3.5mm, Jycar WA-7007

Now lets begin with your modification

1. Remove your head unit using the 2 removal keys and disconnect. It will be tight, It will take some effort to get that thing out. Once removed the cables can very awkward due to the CD player connection having no extra free movement. The plugs can also be a pain to unplug, a slotted screw driver helps to ease them out. Don't worry about mixing them up upon re-connection, they only fit in one way.
2. Remove the top plate, it's secured with 2 screws then lifts off. Again, these screws can also be very tight.
3. Remove the 4 screws that secure the cassette unit, then lift out, don't twist, just a straight up gentle wiggle and pull. You will see where the cassette unit plugs into the main board.
4. You will now see the circuit board clearly, look for an IC (chip) with the following numbers: (IC202) TEA6320. It's towards the top left. You will connect your Ipod input to pins 11 and 22 via the small capacitor. Pin 11 is the left channel, pin 22 is the right channel.



5. If you trace back from pin 11 and 22 you will see a small surface mount capacitor (a little brown rectangle), you will solder your input wire to the top of this, your audio must go 'through' this to the IC. Take care not to hold your soldering iron here for too long, surface mount components are easily removed and a pain to get back in place.
6. Now follow the track that goes from this newly soldered side of the capacitor to a small circle that is covered with solder, this passes the circuit to the other side of the board. The copper track between the

capacitor and the hole must be cut, the red line in the picture above. What the cut will do is block the AM audio from the IC otherwise you will hear both AM and the Ipod through your speakers.

I also connected my 3.5mm socket to this small hole so it would still play AM if nothing was plugged in. It's your choice. Take care if you choose to connect to this, the copper tracks are very delicate and could lift.

TIP: I used 'bread board' cables to connect to the board, they are thin and have a solid end (as in photo). You can get these from Jaycar or Ebay.

7. To finish you will need to tape or glue the wires in place, any small movement will cause damage. You can see damaged tracks in the picture opposite caused when I was 'testing' for this modification.
Remember that the tape unit will have to be put back, it sits very close to the work you just carried out so don't put gobs of glue there.
If your thinking of leaving the tape deck out you need to be aware of the following. It can be removed but every time you power up another audio source will need to be selected. Easier to put it back, even if it's no longer used.
8. Now it's time to put everything back together, with all screws nice and tight. You don't want a short circuit after one has become loose and rolled over the circuit board while your camping in the Daintree.
I would advise a test once you reconnect everything, before you push the unit back into place! Remember how much of a pain it was to remove.
9. Now go for a cruise, blast out a tune while remembering what Will Smith said *"no need to speed through, 2 miles an hour so everybody sees you"*.

This is a very quick 'how to' I know, but I'm sure once your head unit is out you will see how easy it is.

Please be aware that I accept no responsibility if something goes wrong. This does work and really sounds great.

Remember, the small tracks are delicate so take care, it is worth it, I no longer have any CDs in the changer—not required now so I might remove it.

Everything still works as it should with the addition of an Ipod input. It goes without saying that you must not turn up your chosen input device to maximum, use the standard head unit controls. One method I use is to switch between AM and FM, then make my input the same volume and away you go.

I used Ipod as a generic term, you can of course use the input for anything: Satnav audio, TV screen...

We can now refer to the AM button as 'Audio Mod'.

If you do replace the head unit please be sure to recycle your old one, as you should all electronic equipment. The planet now belongs to our children, and their children so let's get it right, look after it and enjoy it.



If I did leave out any information please do email me, I want this 'how to' to be as easy to follow as possible.
email: m.pountney@yahoo.com

If you feel the need to thank me, please buy a scratch card and donate the winnings to a childrens charity.

Originally posted on www.aulro.com by Diesel.

Please read carefully before using this document/file:

By using this document, you agree to these terms of use and agree to comply with all applicable laws and regulations. We may revise these terms of use at any time without notice.

If you do not agree to these terms of use, please refrain from using this document/file.

Marvin hereby authorises you to view, print, copy and distribute information published by Marvin on his Web site or any other publicly accessed site maintained by Marvin (the "Sites"), provided that (a) the information may be used internally (by you or any third party to whom you distribute it) only for informational, non-commercial purposes; (b) no fee may be charged for distribution of any information to any third party; and (c) any and all copyright or other proprietary notices that appear herein, together with this Legal Notice, must appear on all copies that you make or distribute.

Disclaimers

Any information, methodologies, case studies, video files, audio files, software code, photographs, graphics, processes, technologies or other materials (the "Materials") published on the Sites may be the subject of intellectual property rights reserved by Marvin, subsidiaries or licensors. Your terms of use do not grant to you a license hereunder to otherwise use, copy, distribute or transfer the Materials.

All information provided via the Sites, including, without limitation, any of Marvin's or his/its subsidiaries' product or service plans, software programs, software code, offerings, or programs, statements of future directions, "white papers" or other technical or marketing materials (collectively, "Information") is intended for informational purposes only and is subject to change or withdrawal by Marvin at any time without notice. Marvin assumes no responsibility for the accuracy or completeness of the Information. THE INFORMATION IS PROVIDED "AS IS", WITHOUT WARRANTY OF ANY KIND, INCLUDING (WITHOUT LIMITATION) ANY IMPLIED WARRANTIES OF MERCHANTABILITY, FITNESS FOR A PARTICULAR PURPOSE OR NON-INFRINGEMENT. MARVIN FURTHER DISCLAIMS ANY LIABILITY IN CONNECTION WITH THE SITE OR THE INFORMATION PROVIDED HEREIN. Some jurisdictions do not allow the exclusion of implied warranties, so the above exclusion may not apply to you. IN NO EVENT WILL MARVIN BE LIABLE TO ANY PARTY FOR ANY DIRECT, INDIRECT, SPECIAL OR OTHER CONSEQUENTIAL DAMAGES FOR ANY USE OF THE SITES, THE INFORMATION, OR ON ANY OTHER HYPERLINKED WEBSITE, INCLUDING, WITHOUT LIMITATION, ANY LOST PROFITS, BUSINESS INTERRUPTION, LOSS OF PROGRAMS OR OTHER DATA ON YOUR INFORMATION HANDLING SYSTEM OR OTHERWISE, EVEN IF MARVIN IS EXPRESSLY ADVISED OF THE POSSIBILITY OF SUCH DAMAGES.

Copyright Information

All text, graphics, video, source code, and editorial content on this web site are proprietary to Marvin. These materials are protected by copyright and may not be used, copied, transmitted, or reproduced in whole or in part without the express written consent of Marvin. Use of any of Marvin's text, graphics, video, source code, and editorial content (that is hyperlinked to or affiliated with the web site in any way) for any reason or purpose is strictly prohibited. Unauthorised use of the text, graphics, video, source code, and editorial content may violate trademark, copyright, civil and criminal statutes, and privacy and publicity laws. Marvin reserves all rights.

Authored by Marvin Pountney 2012
Photographs & illustrations © Copyright by Marvin Pountney